

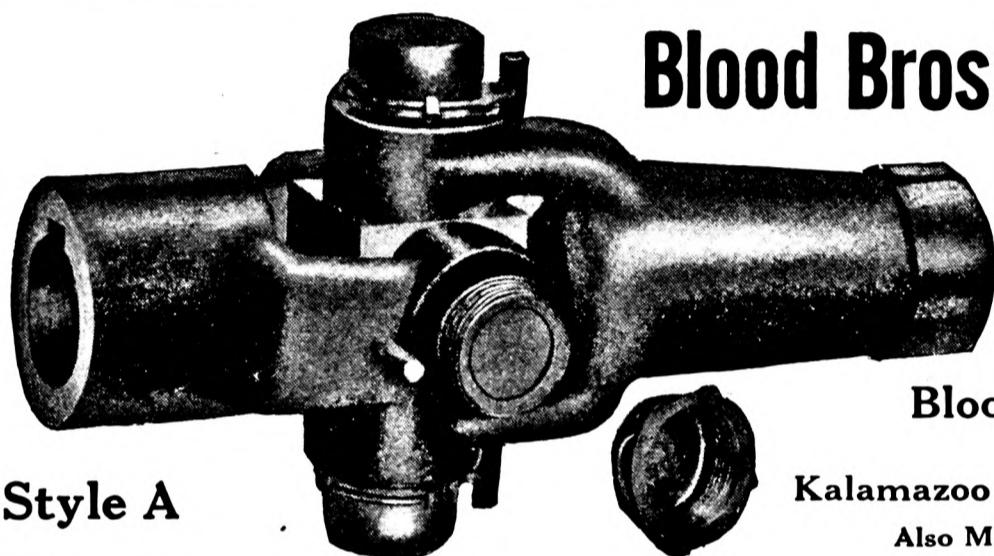
Pat. Oct. 3, 1911

## REDUCE YOUR MILEAGE COST BY USING RELIABLE TIRE SAVERS

Never allow the weight of the car to rest on the tires when in the garage. Keep them off of the oily floors, chain grips, etc. The floors of all garages have more or less oil, gasoline and water, which are natural enemies of rubber and fabric.

Reliable Special, Price per set of four . . . . .	\$5.00
No. 1 Regular, Price per set of four . . . . .	6.70
No. 2 Heavy, Price per set of four . . . . .	8.00
No. 60 Reliable, Price per set of four . . . . .	8.00

**ELITE MFG. COMPANY, Ashland, Ohio**



Style A

## Blood Bros.' Universal Joints

This cut shows our popular Style A Joint. Old Reliable it might well be called, on account of its well-known qualities of strength and durability.

**Blood Bros.' Machine Co.**  
Manufacturers

Kalamazoo :: :: Michigan  
Also Makers of the Cornelian Light Car

## The Buyer's Time Saver

that's what the busy purchasing agents call the

**CHILTON  
AUTOMOBILE  
DIRECTORY**

It tells them what they want to know about sources of supply for parts, tools, appliances and accessories and gives them the information when and as they want it. Every busy buyer should keep a copy at his right hand; for it will save him time and money. Most buyers do—if you are one of the few exceptions, place your order now for a copy of the

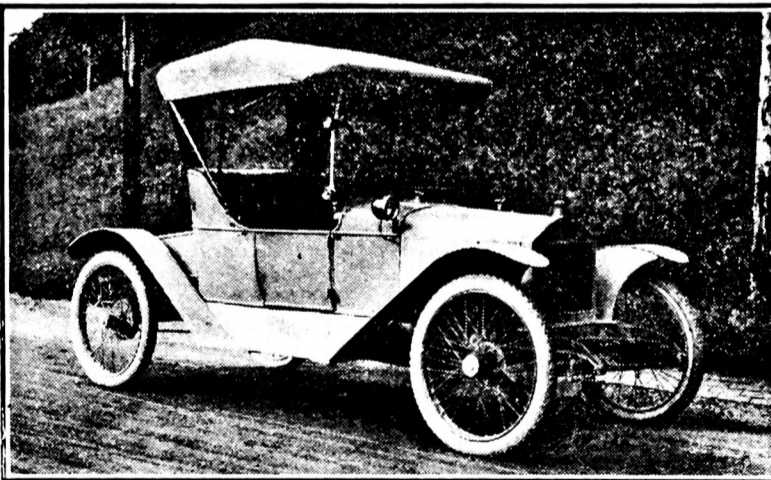
After one experience with it you would not be without a copy at any price. Rarely, if ever, has so much valuable information been bound up in one volume, as you find here.

**Bound in a flexible leather cover—price \$1**

Send now, before you forget it, your check, money order, or currency to the

**CHILTON COMPANY, Market & 49th Sts., Phila.**

## DEALERS WANTED EVERYWHERE FOR THE DILE CAR



Distinctively individual  
Roadability and Economy Unexcelled  
Roomy and Comfortable  
Design and Materials the Best Throughout  
*Specifications mailed on request*

**Price, \$485**

**DILE MOTOR CAR COMPANY  
READING, PENNA.**